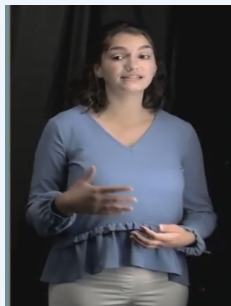




AHEC Scholars Program Offers Student Engagement Opportunities

AHEC SCHOLARS



AHEC Scholar Kelly O'Sullivan presented "Selected Factors Impacting the Progression of Dementia Across Ethnic and Minority Groups" at the 40th annual meeting of the Southern Gerontological Society. Ms. O'Sullivan is a Junior Gerontology Major at Barton College. Her presentation is included in a link below. Geographical in name only, the Southern Gerontological Society is the second largest and most prestigious professional society in the gerontology discipline. [Watch Kelly's presentation. https://www.youtube.com/watch?v=51VJ6n1cZOI](https://www.youtube.com/watch?v=51VJ6n1cZOI)

Jordan Blake and George Venturella presented "Health Behaviors in Middle School Students: Designing a Wilson YMCA After-School Program" at the National AHEC Organization Conference. This research was completed during the 2019-2020 academic school year at Barton College. Their work started out from the connections that they made through the AHEC Scholars Program and later turned into their Honor's capstone research project. Jordan Blake is a 2021 graduate of Barton College, graduating with her degrees in Biology and Health Promotion. George Venturella is a 2020 graduate of Barton College, graduating with a degree in Health Promotion. Both individuals were members of the first cohort of AHEC Scholars.

[NC AHEC Scholar Information](#)



Area L AHEC President/CEO Debby Futrell, middle, presented the book.

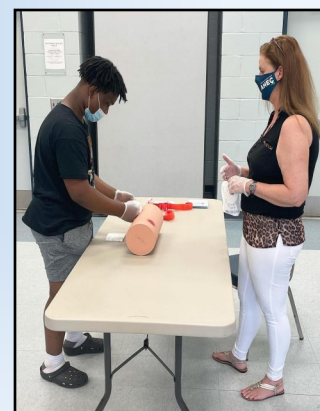
AHEC Scholars who graduated from the program, and those that completed first year for Cohort 3, celebrated their accomplishments with a Dessert and Dollars social. Congratulations to Camryn Frederick (Cohort2) and Samantha Wilcox (Cohort 3) on winning a copy of the book, *The Deepest Well*.

2021 Health Careers Awareness Week

HEALTH CAREERS



Health Careers Awareness Week is designed to provide opportunities, for students interested in health or science, to learn more. Thanks to our speakers and facilities who partnered with us this year: Tarrick Cox, Director of Admissions at ECU's dental school; Jennifer Pilgreen, OR Nurse Manager at Vidant North Hospital; and Lonnie Barker, Medical Laboratory Technologist at Halifax Community College. They also visited Rural Health Group, and attended a 'Stop the Bleed' class with Area L AHEC instructor Patty Collins, MAEd, BSN, RN.



Upcoming Programs

OSHA Laws: Annual Bloodborne Pathogens and Hazcom Update

In Person and Live Webinar [September 24](#)

Gangs and Street Drug Awareness for Healthcare Professionals

In Person and Live Webinar [September 30](#)

Pain Pharmacotherapy: Consideration in Today's Healthcare Landscape

In Person and Live Webinar [October 14](#)

Responding to Bullying and Adolescent Suicide: Prevention and Intervention

In Person and Live Webinar [October 13](#)

Preceptor Development

In Person and Live Webinar [October 22](#)

Wilson Medical Center Pharmacy CE Symposium

In Person and Live Webinar [November 10 & 11](#)

Medical Emergencies in the Dental Office

Live Webinar [December 10](#)

Results-Based Accountability™: Do the Right Things and Do Them Well

Live Webinar [January 11-13](#)

SPICE for the Dental Office

In Person and Live Webinar [February 4](#)

Child and Adolescent Mental Health Amid Covid-19: Reflection, Response, and Resiliency

In Person and Live Webinar [February 9](#)

Pharmacy Law Update

In Person and Live Webinar [April 7](#)



Follow Us

Online Self-Paced Learning

- * Medication Assisted Therapy (MAT) in Primary Care: Why Should I Consider It?
- * Does Compassion Matter in Health Care? An Examination and Application of the Scientific Evidence
- * Pain Management and MAT
- * Understanding Stimulant Use in Youth, Adolescents, and Young Adults
- * An Update to Beers Criteria and High Risk Medication Use

Welcome to the Area L AHEC Team

From left: Connie Rider, Finance Support Specialist; George Venturella, Director for Health Careers and Workforce Diversity; and Nicole Barnes, Executive Assistant to the President/CEO & Administration.



PRACTICE SUPPORT



PRACTICE SUPPORT SERVICES

Let's get started in reaching your goals, contact us today.

Please submit your application for Practice Support Services at <https://my.ncahec.net/roles/ipip/qic/addPractice2.php>

The Area LAHEC PRACTICE SUPPORT TEAM is here to assist you and your practice. Contact us today:
Shannon Cambra, Director, Practice Support/Director Public Health, at shannon.cambra@arealahec.org, or
Priscilla Daniels, Practice Support Consultant at priscilla.daniels@arealahec.org.

NC Medicaid Electronic Health Record (EHR) Incentive Program

Eligible Providers should plan to attest for Program Year 2021 as soon as possible to ensure timely processing and payment.

All Program Year 2021 attestations must be submitted through NC-MIPS, <https://ncmips.nctracks.nc.gov/Home.aspx>, by Oct 31, 2021. NC Medicaid EHR Incentive Program staff guarantee to review the provider's attestation and conduct outreach, if necessary, if the signed attestation and required documentation is received via email by Aug 31, 2021.

No Program Year 2021 attestations will be accepted after Oct 31, 2021.

Please refer to the NC Medicaid Electronic Health Record Incentive Program website: <https://medicaid.ncdhhs.gov/providers/programs-and-services/nc-medicare-electronic-health-record-incentive-program#faqs>, as well as, this NC Medicaid Bulletin: <https://medicaid.ncdhhs.gov/blog/2021/07/06/nc-medicare-ehr-incentive-program-announcements> for additional attestation requirements, information and resources.

Medicaid Managed Care (MMC)

On July 1, nearly 1.6 million Medicaid beneficiaries in North Carolina began receiving the same Medicaid services in a new way through NC Medicaid Managed Care health plans. The link to the [NCDHHS press release: https://www.ncdhhs.gov/news/press-releases/2021/06/30/nc-medicare-managed-care-launch-statewide-july-1](https://www.ncdhhs.gov/news/press-releases/2021/06/30/nc-medicare-managed-care-launch-statewide-july-1). Most beneficiaries will continue to get care from the same doctors they see today but will now be a member of a health plan. Some beneficiaries will not enroll with health plans and will remain in NC Medicaid Direct.

The following resources are available to help providers, practices and patients navigate MMC:

- *The Provider Day One Quick Reference Guide and Fact Sheet* are available on the Fact Sheet webpage: <https://medicaid.ncdhhs.gov/providers/provider-playbook-medicare-managed-care/fact-sheets>
- *What Beneficiaries Need to Know on Day One fact sheet:*
 - English <https://medicaid.ncdhhs.gov/media/9812/open>
 - Spanish <https://medicaid.ncdhhs.gov/media/9813/open>
- Managed Care Claims and Prior Authorization Submission: FAQs Part II <https://ncdhhs.gov>
- *The Provider Playbook:* <https://medicaid.ncdhhs.gov/providers/provider-playbook-medicare-managed-care>
- *NC Medicaid website* <https://medicaid.ncdhhs.gov/>
- *NC Medicaid Help Center* <https://medicaid.ncdhhs.gov/providers/provider-playbook-medicare-managed-care-frequently-asked-questions-and-answers-medicare-providers> for FAQs and to submit a question or concern.
Webinar series: <https://www.ncahec.net/medicare-managed-care/> These webinars will incorporate hot topics based on questions and feedback received from providers/practices, as well as a Virtual Office Hours.
Register today!

Take advantage of the opportunity to stay connected with us, other practices within our region, and to receive the latest updates and information by joining our Practice Support Listserv.
<https://gaggle.email/join/arealpracticesupport@gaggle.email>.

📍 Rural Opportunity Institute

Area LAHEC is the fiscal sponsor for the Rural Opportunity Institute (ROI) project based in Edgecombe, Nash, and Wilson counties. Thanks to the support from [The Kate B. Reynolds Trust](#) through their Healthy Places initiative, Area LAHEC and ROI have been able to deliver evidence-informed *Reconnect for Resilience training, along with awareness-building presentations to various health, education, and non-profit organizations in the region*. The training teaches a series of somatic (body-based) skills that are easy to use, practical, and can help anyone improve the health of their nervous system. The trainings are an introduction to concepts in becoming trauma-informed and resilience-focused, both individually, and within organizations.

Knowledge Building Impact

- 13,000 community members reached since January 2020, while driving economic opportunities for dedicated leaders
- 158 Awareness Building Presentations
- 81 Reconnect for Resilience Trainings & Practice Groups
- 107 Listening Circles
- \$85,000+ in collective earnings paid to local training leaders
- \$150,000+ in scholarships to over 600 community members

Non-Profit Org.
US Postage
PAID
Wilson, NC
Permit # 507